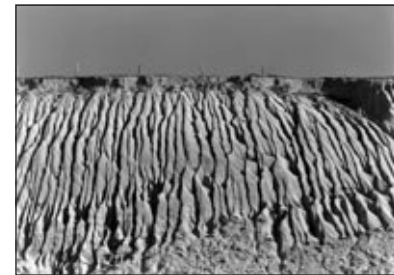


# HERBERT QUICK **PHOTOGRAPHER**



LANDSCAPE

*Herbert Quick: Photographer* is a joint presentation of Intangible Publications and the California Museum of Photography (University of California, Riverside). Curator: E. R. Beardsley.

*Herbert Quick: Photographer* is presented in seven files:

Introduction: HQintro.pdf	<b>Landscape: HQland.pdf</b>
Early Years: HQearly.pdf	Portraits: HQportrt.pdf
Architecture: HQarch.pdf	Studies: HQstudy.pdf
Chronology and Index: HQindex.pdf	

Text and photographs copyright © 1996 Herbert Quick.  
All rights reserved.

Design by Mike Lee.

You are invited to print and enjoy this document for your personal use.  
For other publication and presentation permissions, please contact the author at the address below.

Intangible Publications is a 501(c)(3) nonprofit corporation devoted to the best in literature and art. Your tax-deductible donations are always welcome.

**Intangible Publications, Inc.**

1430 Willamette #200  
Eugene, Oregon 97401

**E-mail** office@intangible.org **Web** www.intangible.org

## LANDSCAPE

“Photography is a means of mass producing pictures, a means of making representations of a lot of things easily. This is part of the photographer’s job, if he is a documentary photographer, to photograph as much of the countryside for historical purposes as is possible. That’s been my purpose: to document as much as possible, to show what is going on in the landscape, what we’re doing to it, the cities the way we arrange them, the way we build.”



Nr. 46-5. Dana Point, California. 1946



Nr. 501101. Highway 1, near Carmel, California. 1950



Nr. 521101. Richmond, California. 1952



Nr. 661213. Near Halfmoon Bay, California. 1966



Nr. 790111. Horse Ranch, Riverside, California. 1979



Nr. 790202. North Main Street, Riverside, California. 1979





Nr. 810102. Bean Field and Smog. 1981



Nr. 870223. New Lots for New California, Riverside, California. 1987